



## North Street, Rossendale, BB4 9QZ Offers In Excess Of £90,000

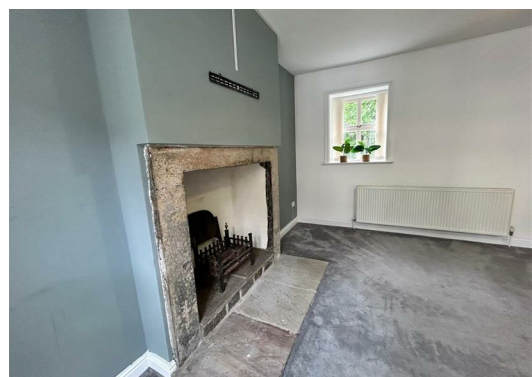
\*\*\* IDEAL PROPERTY FOR FIRST TIME BUYER, DOWNSIZER OR AN INVESTOR\*\*\*

A well-presented, two-bedroom, mid-terrace house situated in a popular residential area of Water which is within walking distance to the local countryside and is nearby to the local amenities, schools and transport links for commuting to Rawtenstall, Burnley, Bacup and surrounding areas.

The property comprises, open plan lounge and kitchen, two bedrooms, a three piece bathroom suite with a shower over the bath and a cellar for storage. The property benefits from gas central heating, uPVC double glazing and street parking nearby.

This property is also suitable for investors as it has been previously rented out for a long number of years and has an estimated rental income per annum of £7800.

Lifestyle Sales and Lettings urge interested parties to arrange an internal inspection as soon as possible to avoid disappointment.





**Kitchen/Lounge**  
19'8" x 14'9" (6.00 x 4.50)

**Bedroom1**  
7'10" x 14'9" (2.40 x 4.50)

**Bedroom 2**  
6'2" x 9'6" (1.90 x 2.90)

**Bathroom**  
4'7" x 8'6" (1.40 x 2.60)

**Cellar**  
5'2" x 14'5" (1.60 x 4.40)

### Disclaimer

These particulars, whilst believed to be accurate are set out as a general guideline and do not constitute any part of an offer or contract. Intending Purchasers should not rely on them as statements of representation of fact, but must satisfy themselves by inspection or otherwise as to their accuracy. Please note that we have not tested any apparatus, equipment, fixtures, fittings or services including gas central heating and so cannot verify they are in working order or fit for their purpose. Furthermore, Solicitors should confirm movable items described in the sales particulars and, in fact, included in the sale since circumstances do change during the marketing or negotiations. Although we try to ensure accuracy, if measurements are used in this listing, they may be approximate. Therefore, if intending Purchasers need accurate measurements to order carpeting or to ensure existing furniture will fit, they should take such measurements themselves. Photographs are reproduced general information and it must not be inferred that any item is included for sale with the property.

Tenure - Leasehold

To be confirmed by the Vendor's Solicitors

Possession:

Vacant possession

Viewing:

Viewing strictly by appointment through Lifestyle Sales and Letting

**Important Information For Successful Buyers**

We are required by law to conduct anti-money laundering checks on all those buying a property. Whilst we retain responsibility for ensuring checks and any ongoing monitoring are carried out correctly, the initial checks are carried out on our behalf by Lifetime Legal who will contact you once you have had an offer accepted on a property you wish to buy. The cost of these checks is £65 (incl. VAT), which covers the cost of obtaining relevant data and any manual checks and monitoring which might be required. This fee will need to be paid by you in advance of us issuing a memorandum of sale, directly to Lifetime Legal, and is non-refundable. We will receive some of the fee taken by Lifetime Legal to compensate for its role in the provision of these checks.

Energy Efficiency Rating			Environmental Impact (CO <sub>2</sub> ) Rating		
	Current	Potential		Current	Potential
Very energy efficient - lower running costs			Very environmentally friendly - lower CO <sub>2</sub> emissions		
(92 plus) A			(92 plus) A		
(81-91) B			(81-91) B		
(69-80) C			(69-80) C		
(55-68) D			(55-68) D		
(39-54) E			(39-54) E		
(21-38) F			(21-38) F		
(1-20) G			(1-20) G		
Not energy efficient - higher running costs			Not environmentally friendly - higher CO <sub>2</sub> emissions		
England & Wales			England & Wales		
EU Directive 2002/91/EC			EU Directive 2002/91/EC		

